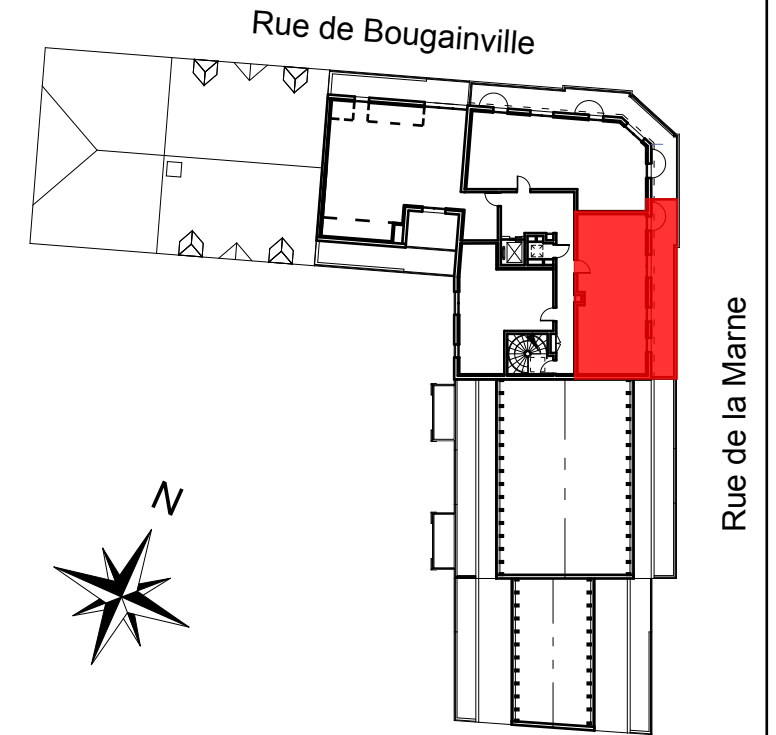
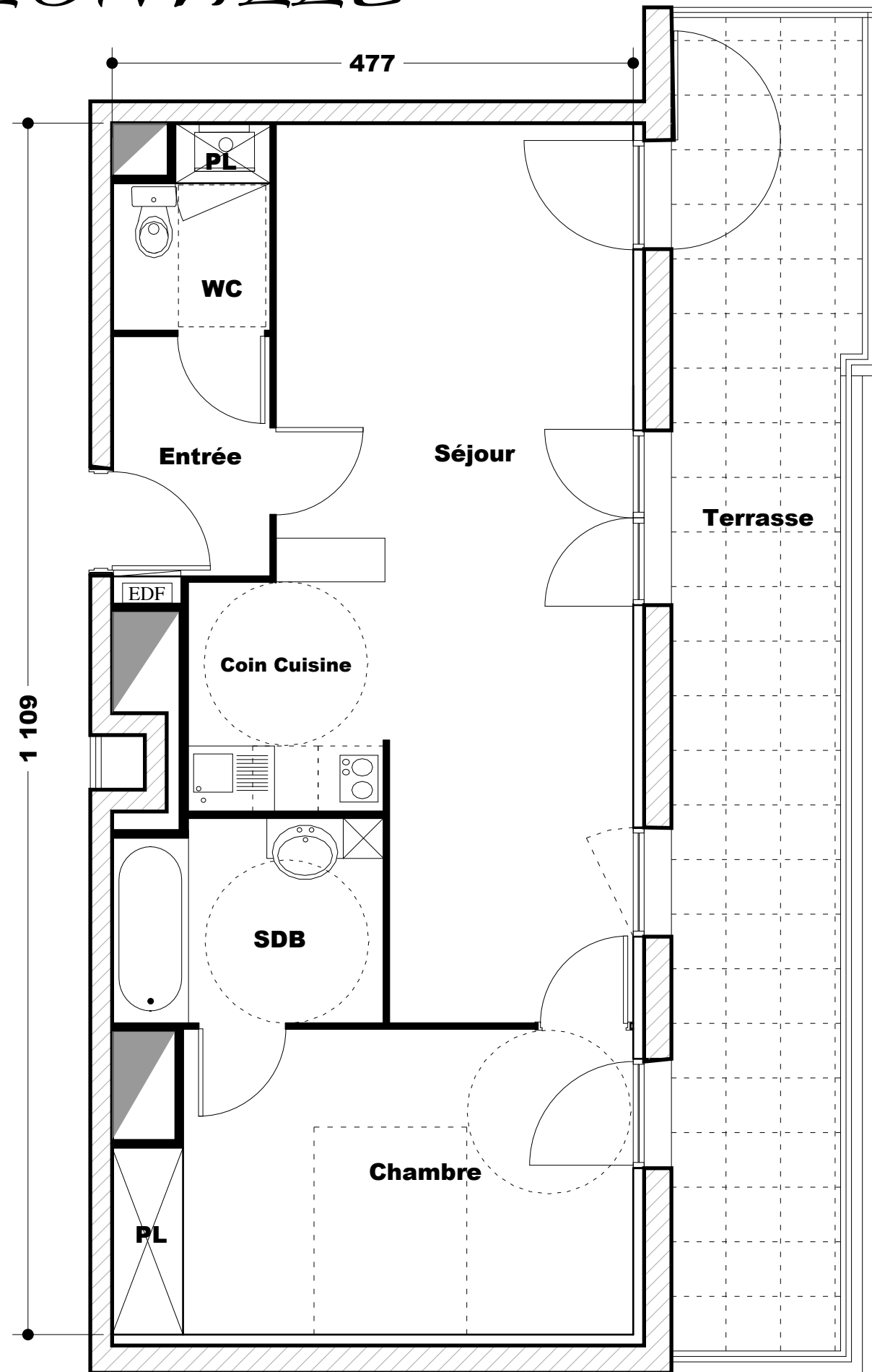


LE SABLONVILLE



APPARTEMENT T2

| | |
|------------------------------|-----------------|
| N° | 48 |
| NIVEAU | R + 4 |
| SÉJOUR + COIN CUISINE | 26.65 m2 |
| CHAMBRE + PL | 12.65 m2 |
| SDB | 4.55 m2 |
| WC | 2.40 m2 |
| ENTREE | 3.20 m2 |
| Surface Habitable : | 49.45 m2 |
| Terrasse | 18.50 m2 |
| Surface Totale : | 67.95 m2 |

